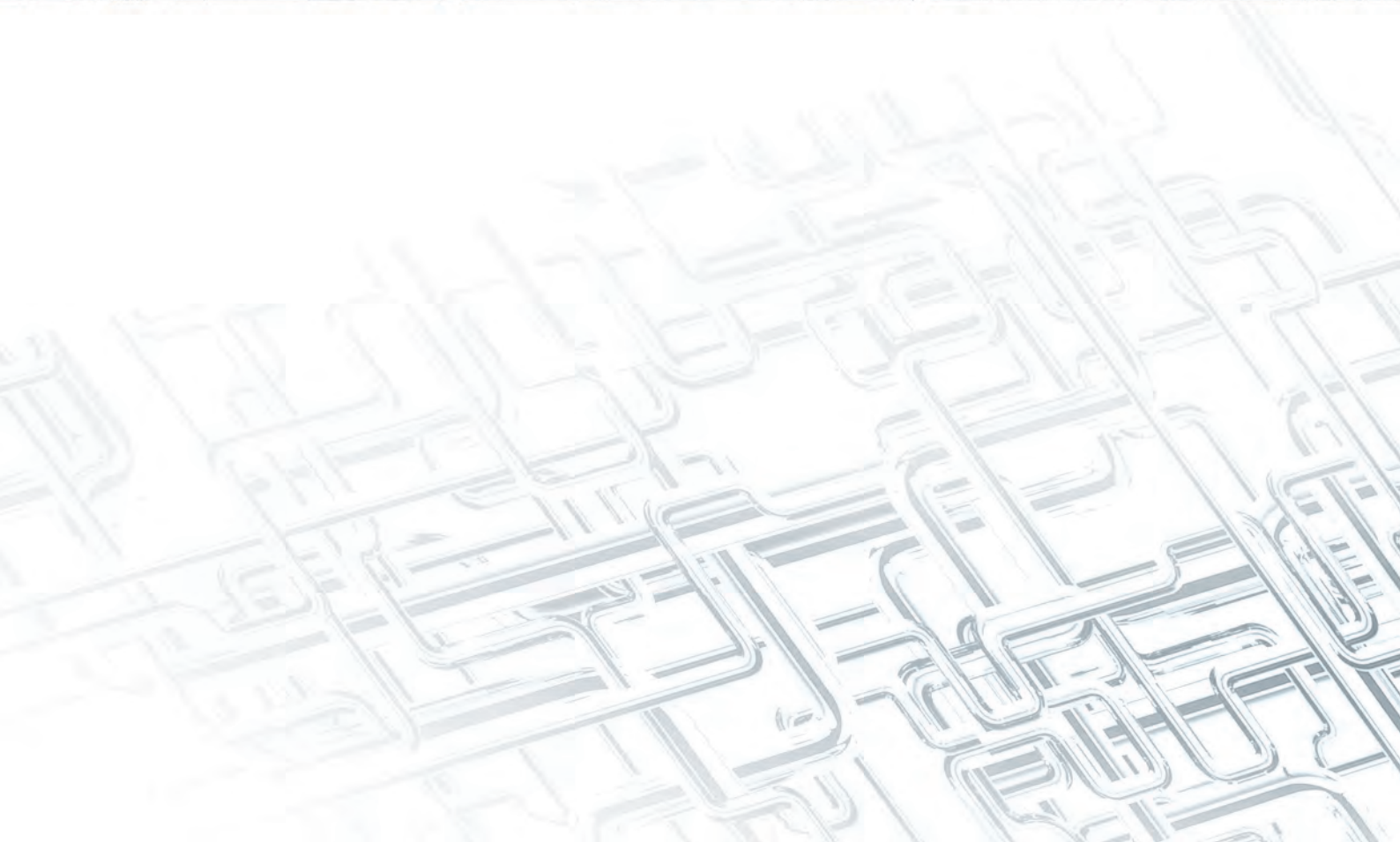
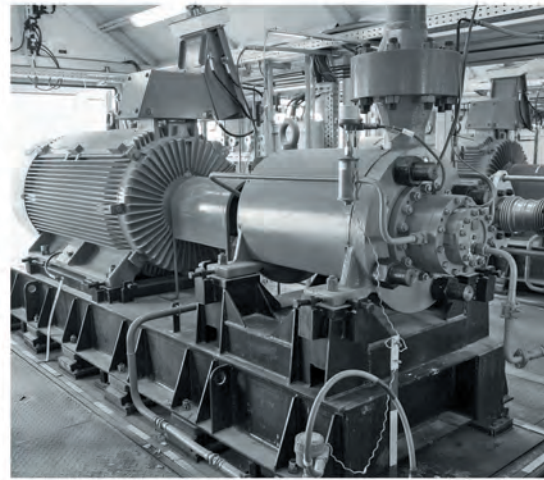
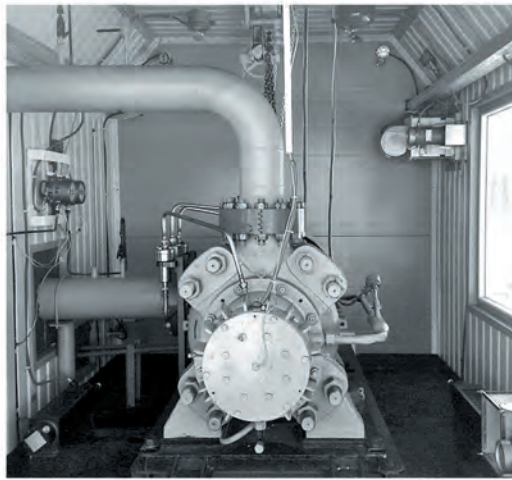
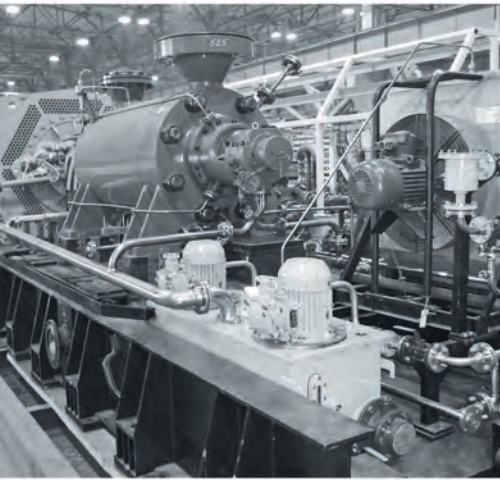




ENGINEERING FLOW SOLUTIONS

PUMPING EQUIPMENT FOR WATER INJECTION



CONTENTS

CNS PUMPS

General Description	2
Liquid Parameters	3
Pumps Designation	3
Performance Range	4
CNS Pumps with Increased Discharge Pressure.....	5
CNS Pumps for Single and Double Pump High Pressure Packages	6
CNS Pumps with Onboard Water Lubricated Bearings.....	8
CNSz Pumps with Pull-Out Device	10
CNSp Pumps with Opposite Impellers Arrangement.....	12
CNS Pumps Retrofit.....	14

ECPK PUMPS

Application.....	15
Design Features	15
Materials	15
Scope of Supply.....	15
Pumped Liquid.....	15
Pump Designation	15
Performance Range and Technical Data.....	16-17

CNS PUMPS SERIES: GENERAL DESCRIPTION

APPLICATION

The CNS series pumps are intended for water injection in the oil recovery operations at oilfields:

- systems of stratified in-contour and out-contour flooding
- oilfield formation water treatment and water disposal systems

PUMPED LIQUID

- Fresh water from surface sources
- Circulating oilfield formation water
- Sewage and cenomanian water
- Aggressive and H₂S-saturated water

DESIGN FEATURES

The CNS series are centrifugal, single casing, radially split, multistage, sectional, between-bearings pumps, a BB4 type of the API 610 standard, with one-way liquid feeding to the first stage.

- Coupling: elastic diaphragm
- Impellers: single suction, in-line arranged
- Rotor axial load compensation: hydraulic balancing device with special rings of the wear- and corrosion-resistant alloys.
- Bearings: outboard, friction (sleeve) type
- Lubrication: forced (pressure lubrication unit)
- Shaft end seal: mechanical type
- Nozzles: flanged type (suction nozzle – horizontal, discharge nozzle – vertical)

Material options depend on service conditions and properties of the pumped liquid.

OPTIONS

- Bearings with forced or oil bath lubrication
- Cyclone separators for purified liquid supply into chambers of mechanical seals
- Gear or diaphragm coupling
- Air- or water-cooled oil lubrication system with a gear or centrifugal oil pump
- Individual base plate for pump or common base plate for the entire pump-motor set
- Welded or cast base plate (frame)
- Explosion-proof versions of pump and motor

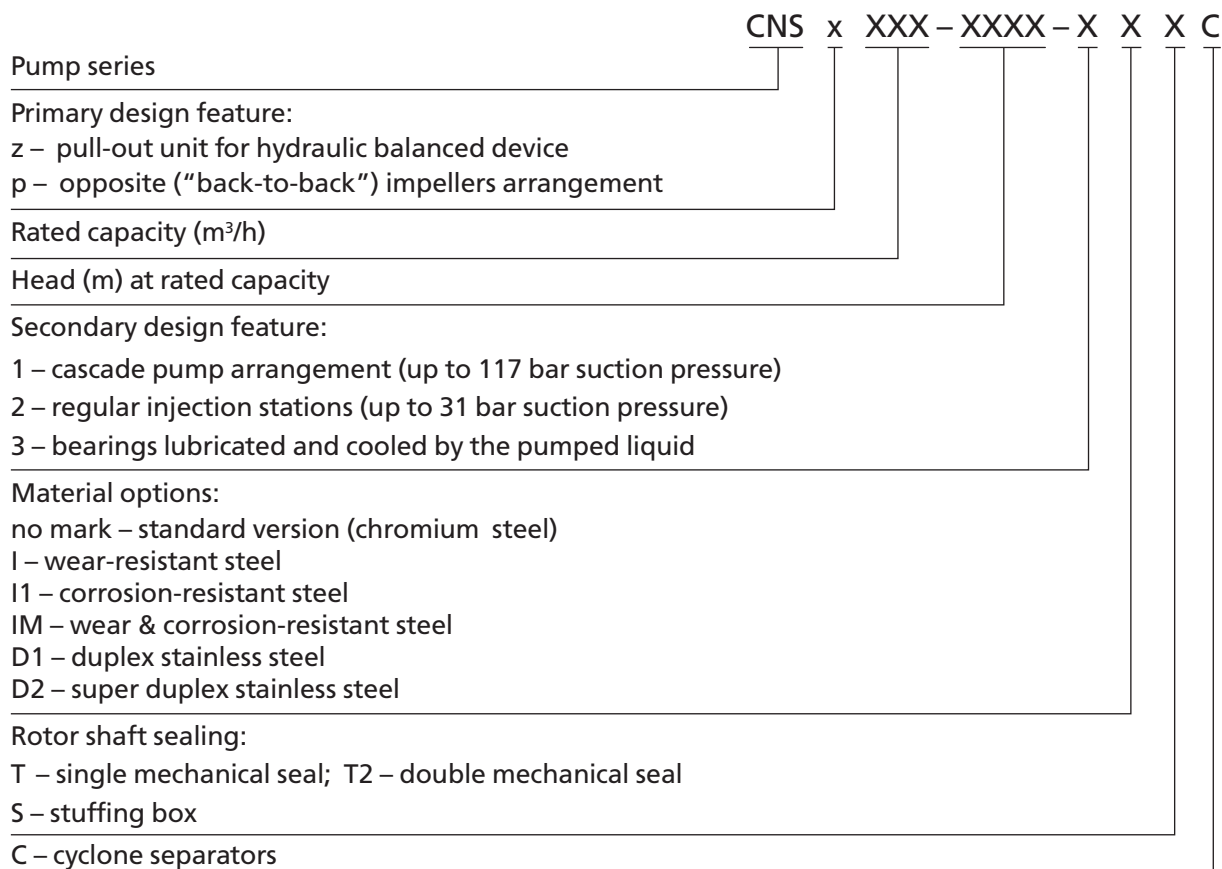
SCOPE OF SUPPLY

- Pump with electric motor on the base plate with auxiliary pipelines
- Lubrication system
- Coupling with guard
- Instrumentation
- Spare parts, tools and accessories
- Manuals

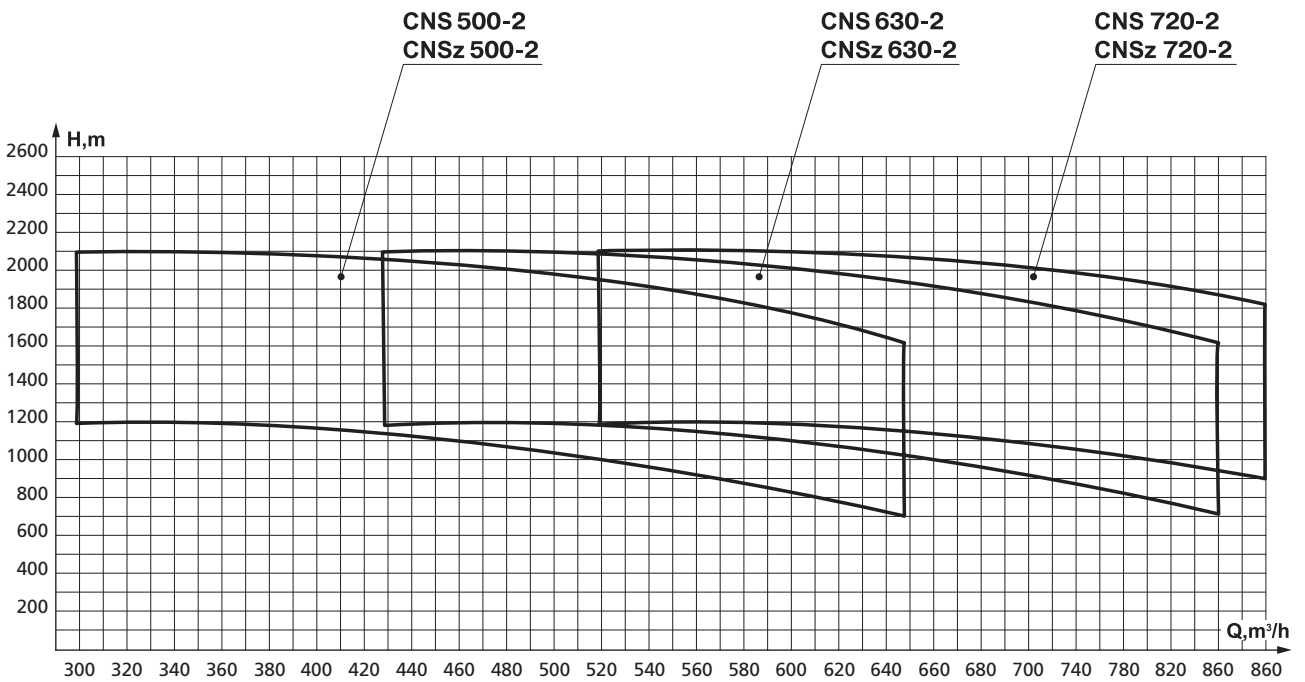
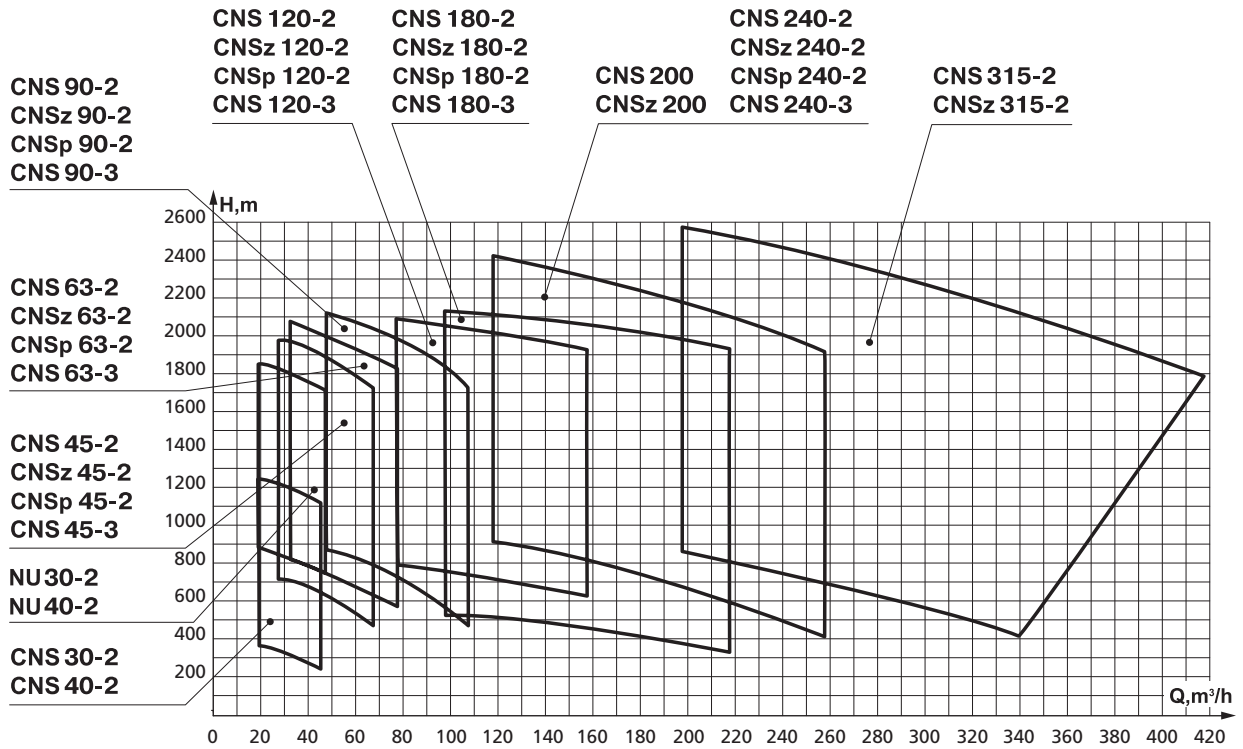
Liquid parameters	CNS pumps casing material options			
	Standard	Wear-resistant	Wear & corrosion-resistant	Duplex & Superduplex
	Fresh clean water, stratal water w/o H ₂ S content	H ₂ S containing sewage and stratal water	H ₂ S containing aggressive sewage and stratal water	H ₂ S containing highly aggressive sewage and stratal water
Temperature, °C	0 – 60	0 – 60	0-80*	0-80
Solid particles, mm	0.2	0.2	0.2	0.2
Density, kg/m ³	1000-1050	1000-1200	1000-1200	1000-1200
pH	6.5 – 9.0	4.0 – 4.9	4.0 – 9.0	4.0 – 9.0
Oil products, mg/l	100	200	200	200
Cl ⁻	1 500	150 000	150 000	150 000
SO ₄ ⁻⁻	100	1 000	1 000	1 000
HCO ₃ ⁻	50	200	200	200
Ca ⁺⁺	1 000	10 000	10 000	10 000
Mg ⁺⁺	500	2 500	2 500	2 500
Na + K ⁺⁺	3 000	60 000	60 000	60 000
Fe	-	200	200	200
CO ₂	50	300	300	300
O ₂	-	5	5	5
H ₂ S	-	100	300	400

* Customized CNS pumps for water temperature above 80 °C are available by request

PUMPS DESIGNATION



PERFORMANCE RANGE



CNS PUMPS

With Increased Discharge Pressure

DISTINCTIVE FEATURES

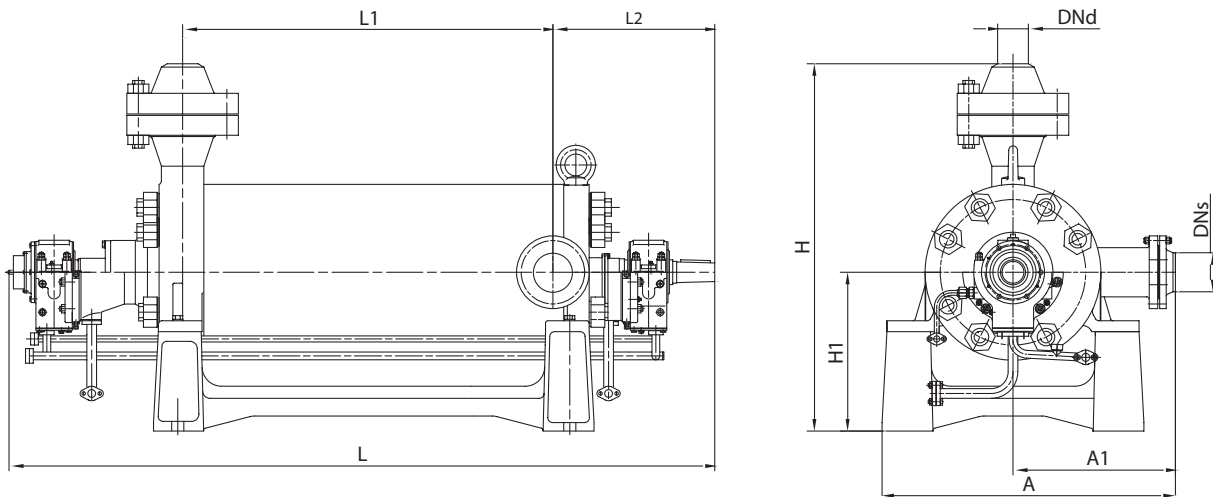
- A special version of a standard CNS 240-1900 pump with increased discharge pressure
- Identical foundation fixture layout and flanges arrangement with model CNS 180-1900
- Available in version with a pull-out unit for hydraulic balancing device



TECHNICAL DATA					
Pump type	$P_{suction}$, bar, max	Capacity, m ³ /h	Head, m	NPSHr, m	Motor power, kW
CNS 240-1900	31	200	2200	7	1600

Motor power is specified for density of 1000 kg/m³. Synchronous rotation speed is 3000 rpm. Customized parameters are optionally available.

OVERALL DIMENSIONS. CNS PUMPS (IN-LINE IMPELLERS)



Model	DN _s	DN _d	A	A1	H	H1	L	L1	L2
CNS 240-1900	150	125	1210	670	1515	655	2885	1567	625

CNS PUMPS

For Single and Double Pump High Pressure Packages

DISTINCTIVE FEATURES

- Can form a high-pressure pumping units of two CNS 30-... or CNS 40-... series pumps driven by one electric motor
- Identical foundation fixture layout and flanges arrangement within the series
- Oil bath lubrication (option, selected models only)
- Shaft gland seal (option)

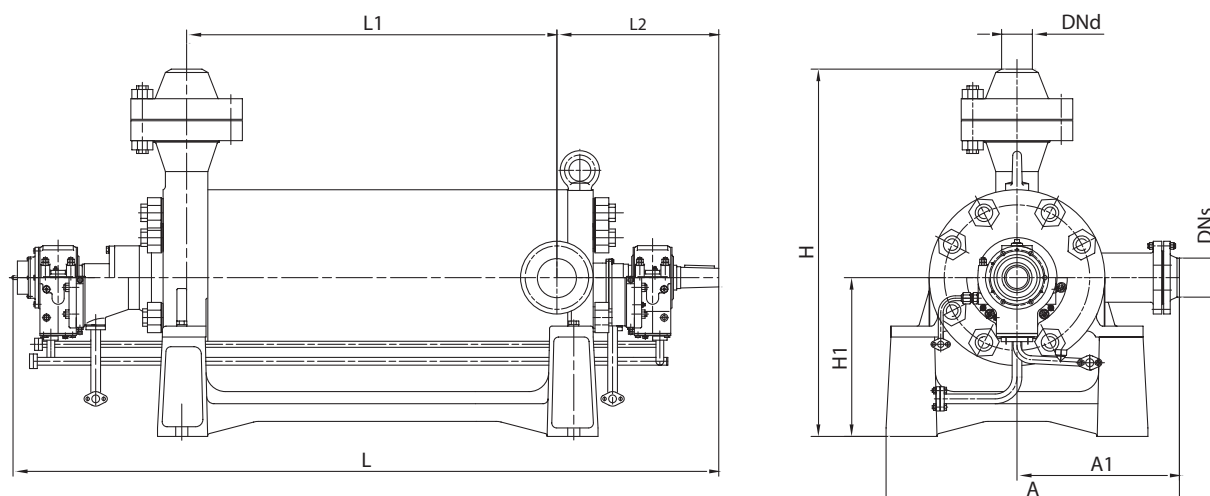


TECHNICAL DATA

Pump type	P _{suction} , bar, max	Capacity, m ³ /h	Head, m	NPSHr, m	Motor power, kW
CNS 30-1050-1	117	30	1050	5	200
CNS 40-1050-1	117	40	1050	5.5	250
CNS 30-800-2	31	30	800	5	160
CNS 30-1050-2	31	30	1050	5	200
CNS 30-1422-2	31	30	1300	5	250
CNS 45-1050-2	31	45	1050	5	500
CNS 45-1422-2	31	45	1422	5	630
CNS 45-1900-2	31	45	1900	5	800
CNS 63-1050-2	31	63	1050	5	500
CNS 63-1422-2	31	63	1422	5	630
CNS 63-1900-2	31	63	1900	5	1000
CNS 90-1050-2	31	90	1050	5	630
CNS 90-1422-2	31	90	1422	5	800
CNS 90-1900-2	31	90	1900	5	1000
CNS 120-1050-2	31	120	1050	6	800
CNS 120-1422-2	31	120	1422	6	1000
CNS 120-1900-2	31	120	1900	6	1250
CNS 180-1050-2	31	180	1050	7	800
CNS 180-1422-2	31	180	1422	7	1250
CNS 180-1900-2	31	180	1900	7	1600
CNS 240-1050-2	31	240	1050	7	1000
CNS 240-1422-2	31	240	1422	7	1250
CNS 240-1900-2	31	240	1900	7	1600
CNS 315-1050-2	31	315	1050	9	1600
CNS 315-1422-2	31	315	1422	9	2000
CNS 315-1900-2	31	315	1900	9	2500
CNS 500-1050-2	16	500	1050	14/9*	2500
CNS 500-1422-2	16	500	1422	14/9*	3150
CNS 500-1900-2	16	500	1900	14/9*	4000
CNS 630-1050-2	16	630	1050	16/9*	2500
CNS 630-1422-2	16	630	1422	16/9*	4000
CNS 630-1700	16	630	1700	16	3648
CNS 630-1900-2	16	630	1900	16/9*	5000
CNS 720-1050-2	16	720	1050	20/12*	3150
CNS 720-1422-2	16	720	1422	20/12*	4000
CNS 720-1900-2	16	720	1900	20/12*	5000

1. Synchronous rotation speed is 3000 rpm 2. Motor power is specified for density of 1000 kg/m³ 3. * Value is specified if inducer is installed
4. Customized parameters are optionally available

OVERALL DIMENSIONS. CNS PUMPS (IN-LINE IMPELLERS)



Model	DNs	DNd	A	A1	H	H1	L	L1	L2		
CNS 30-1050-1	80	65	730	345	1060	490	2120	1059	510		
CNS 40-1050-1											
CNS 30-800-2	80	65	730	345	1060	490	2120	1059	510		
CNS 30-1050-2											
CNS 30-1422-2											
CNS 30-1422-2	150	125	1210	670	1290	650	2490	1237	635		
CNS 45-1050-2							2595	1342			
CNS 45-1050-2							1425	565		2220	902
CNS 45-1422-2							1515	655		2505	1187
CNS 45-1900-2							2885	1567			
CNS 63-1050-2							1425	565		2220	902
CNS 63-1422-2							1515	655		2505	1187
CNS 63-1900-2							2885	1567			
CNS 90-1050-2							1425	565		2220	902
CNS 90-1422-2							1515	655		2505	1187
CNS 90-1900-2							2885	1567			
CNS 120-1050-2							1425	565		2220	902
CNS 120-1422-2							1515	655		2505	1187
CNS 120-1900-2							2885	1567			
CNS 180-1050-2							1425	565		2220	902
CNS 180-1422-2							1515	655		2505	1187
CNS 180-1900-2							2885	1567			
CNS 240-1050-2							1425	565		2220	902
CNS 240-1422-2	1515	655	2505	1187							
CNS 240-1900-2	2885	1567									
CNS 315-1050-2	200	150	1275	685	1635	675	2407	955	640		
CNS 315-1422-2							2715	1261			
CNS 315-1900-2							3020	1567			
CNS 500-1050-2	300	200	1330	685**	1727	790	2209	832	730		
CNS 500-1422-2							2346	969			
CNS 500-1900-2							2620	1243			
CNS 630-1050-2							2209	832			
CNS 630-1422-2							2346	969			
CNS 630-1700-2							2620	1243			
CNS 630-1900-2							2620	1243			
CNS 720-1050-2							2209	832			
CNS 720-1422-2							2346	969			
CNS 720-1900-2							2620	1243			

** Suction nozzle is directed vertically upwards

CNS PUMPS

With Onboard Water Lubricated Bearings

DISTINCTIVE FEATURES

- Sleeve type, onboard bearings with lubrication by the pumped liquid
- Lightweight, simple design, without pressure lubrication unit
- Only one mechanical seal is required
- Identical foundation fixture layout and flanges arrangement within CNS-180... series
- Pump maintenance/repair without dismantling off the pipelines
- High-precision rotor alignment in bearings housings at the factory (option)

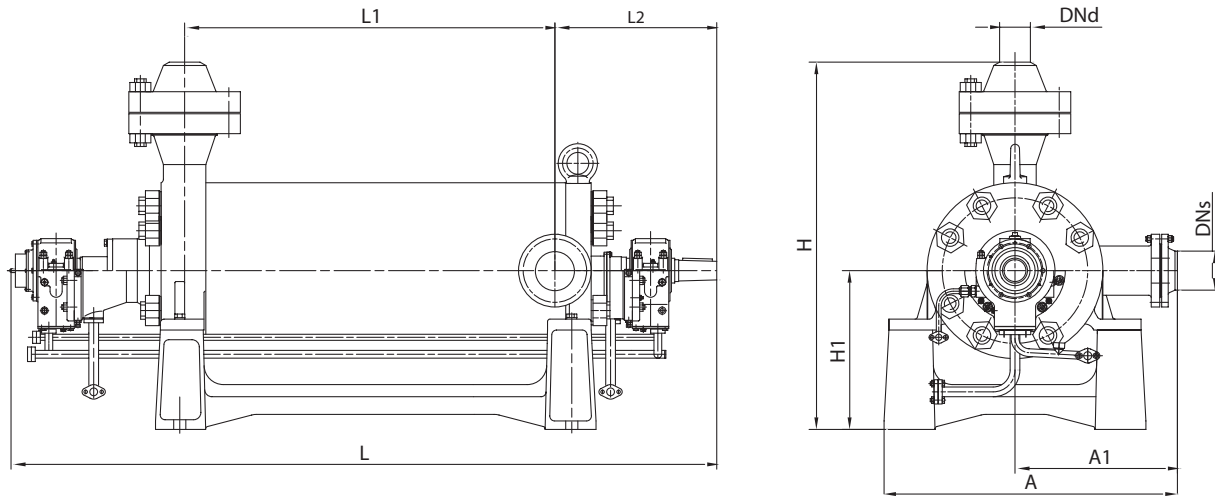


TECHNICAL DATA

Pump type	P _{suction} , bar, max	Capacity, m ³ /h	Head, m	NPSHr, m	Motor power, kW
CNS 45-1050-3	31	45	1050	5	500
CNS 45-1422-3	31	45	1422	5	630
CNS 45-1900-3	31	45	1900	5	800
CNS 63-1050-3	31	63	1050	5	500
CNS 63-1422-3	31	63	1422	5	630
CNS 63-1900-3	31	63	1900	5	1000
CNS 90-1050-3	31	90	1050	5	630
CNS 90-1422-3	31	90	1422	5	800
CNS 90-1900-3	31	90	1900	5	1000
CNS 120 -1050-3	31	120	1050	6	800
CNS 120 -1422-3	31	120	1422	6	1000
CNS 120 -1900-3	31	120	1900	6	1250
CNS 180-1050-3	31	180	1050	7	800
CNS 180-1422-3	31	180	1422	7	1250
CNS 180-1900-3	31	180	1900	7	1600
CNS 240-1422-3	31	240	1422	7	1250
CNS 240-1900-3	31	240	1900	7	1600

1. Synchronous rotation speed is 3000 rpm 2. Motor power is specified for density of 1000 kg/m³ 3. Customized parameters are optionally available

OVERALL DIMENSIONS. CNS PUMPS (IN-LINE IMPELLERS)



Model	DNs	DNd	A	A1	H	H1	L	L1	L2
CNS 45-1050-2	150	125	1210	670	1425	565	2220	902	625
CNS 45-1422-2					1515	655	2505	1187	
CNS 45-1900-2					2885	1567			
CNS 63-1050-2					1425	565	2220	902	
CNS 63-1422-2					1515	655	2505	1187	
CNS 63-1900-2					2885	1567			
CNS 90-1050-2					1425	565	2220	902	
CNS 90-1422-2					1515	655	2505	1187	
CNS 90-1900-2					2885	1567			
CNS 120-1050-2					1425	565	2220	902	
CNS 120-1422-2					1515	655	2505	1187	
CNS 120-1900-2					2885	1567			
CNS 180-1050-2					1425	565	2220	902	
CNS 180-1422-2					1515	655	2505	1187	
CNS 180-1900-2					2885	1567			
CNS 240-1050-2					1425	565	2220	902	
CNS 240-1422-2					1515	655	2505	1187	
CNS 240-1900-2					2885	1567			

CNSz PUMPS

With Pull-Out Device

DISTINCTIVE FEATURES

- Pull-out unit for hydraulic balancing device for axial thrust compensation
- Increased reliability and operational lifetime due to pull-out device providing a certain clearance between rotor and stator at pump's start/stop
- Oil bath lubrication for the end thrust and support bearings (option, selected models only)
- Cyclone separators for purified liquid feeding into mechanical seal chamber

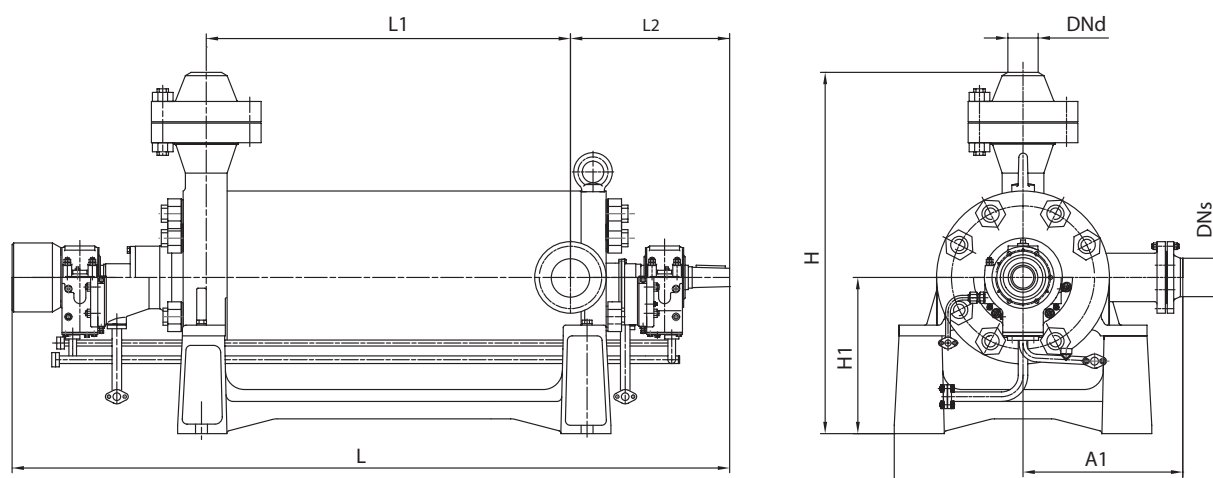


TECHNICAL DATA

Pump type	P _{suction} , bar, max	Capacity, m ³ /h	Head, m	NPSHr, m	Motor power, kW
CNSz 30-800-2	31	30	800	5	160
CNSz 30-1050-2	31	30	1050	5	200
CNSz 30-1422-2	31	30	1300	5	250
CNSz 45-1050-2	31	45	1050	5	500
CNSz 45-1422-2	31	45	1422	5	630
CNSz 45-1900-2	31	45	1900	5	800
CNSz 63-1050-2	31	63	1050	5	500
CNSz 63-1422-2	31	63	1422	5	630
CNSz 63-1900-2	31	63	1900	5	1000
CNSz 90-1050-2	31	90	1050	5	630
CNSz 90-1422-2	31	90	1422	5	800
CNSz 90-1900-2	31	90	1900	5	1000
CNSz 120 -1050-2	31	120	1050	6	800
CNSz 120 -1422-2	31	120	1422	6	1000
CNSz 120 -1900-2	31	120	1900	6	1250
CNSz 180-1050-2	31	180	1050	7	800
CNSz 180-1422-2	31	180	1422	7	1250
CNSz 180-1900-2	31	180	1900	7	1600
CNSz 240-1050-2	31	240	1050	7	1000
CNSz 240-1422-2	31	240	1422	7	1250
CNSz 240-1900-2	31	240	1900	7	1600
CNSz 315-1050-2	31	315	1050	9	1600
CNSz 315-1422-2	31	315	1422	9	2000
CNSz 315-1900-2	31	315	1900	9	2500
CNSz 500-1050-2	16	500	1050	14/9*	2500
CNSz 500-1422-2	16	500	1422	14/9*	3150
CNSz 500-1900-2	16	500	1900	14/9*	4000
CNSz 630-1050-2	16	630	1050	16/9*	2500
CNSz 630-1422-2	16	630	1422	16/9*	4000
CNSz 630-1700	16	630	1700	16	3648
CNSz 630-1900-2	16	630	1900	16/9*	5000
CNSz 720-1050-2	16	720	1050	20/12*	3150
CNSz 720-1422-2	16	720	1422	20/12*	4000
CNSz 720-1900-2	16	720	1900	20/12*	5000

1. Synchronous rotation speed is 3000 rpm. 2. Motor power is specified for density of 1000 kg/m³. 3. * Value is specified if inducer is installed.
4. Customized parameters are optionally available.

OVERALL DIMENSIONS. CNS PUMPS (IN-LINE IMPELLERS + PULL-OUT DEVICE)



Model	DNs	DNd	A	A1	H	H1	L	L1	L2
CNSz 30-800-2	80	65	730	345	1060	490	2420	1059	510
CNSz 30-1050-2			700	440**	1290	650	2790	1237	635
CNSz 30-1422-2							2895	1342	
CNSz 45-1050-2	150	125	1210	670	1425	565	2520	902	625
CNSz 45-1422-2					1515	655	2805	1187	
CNSz 45-1900-2							3185	1567	
CNSz 63-1050-2					1425	565	2520	902	
CNSz 63-1422-2					1515	655	2805	1187	
CNSz 63-1900-2							3185	1567	
CNSz 90-1050-2					1425	565	2520	902	
CNSz 90-1422-2					1515	655	2805	1187	
CNSz 90-1900-2							3185	1567	
CNSz 120-1050-2					1425	565	2520	902	
CNSz 120-1422-2					1515	655	2805	1187	
CNSz 120-1900-2							3185	1567	
CNSz 180-1050-2	1425	565	2520	902					
CNSz 180-1422-2	1515	655	2805	1187					
CNSz 180-1900-2			3185	1567					
CNSz 240-1050-2	1425	565	2520	902					
CNSz 240-1422-2	1515	655	2805	1187					
CNSz 240-1900-2			3185	1567					
CNSz 315-1050-2	200	150	1275	685	1635	675	2707	955	640
CNSz 315-1422-2							3015	1261	
CNSz 315-1900-2							3320	1567	
CNSz 500-1050-2	300	200	1330	685**	1727	790	2509	832	730
CNSz 500-1422-2							2646	969	
CNSz 500-1900-2							2920	1243	
CNSz 630-1050-2							2509	832	
CNSz 630-1422-2							2646	969	
CNSz 630-1900-2							2920	1243	
CNSz 720-1050-2							2509	832	
CNSz 720-1422-2							2646	969	
CNSz 720-1900-2							2920	1243	

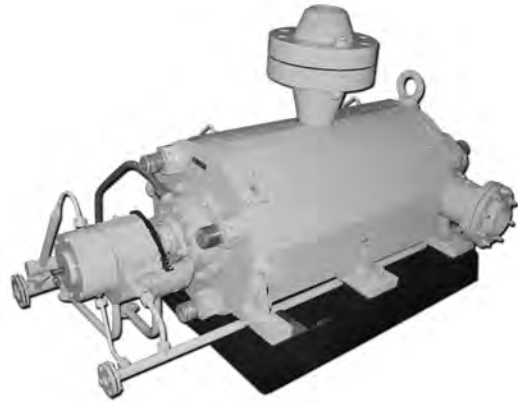
** Suction nozzle is directed vertically upwards

CNSp PUMPS

With Opposite Impellers Arrangement

DISTINCTIVE FEATURES

- Opposite («back-to-back») impellers arrangement for the rotor axial thrust compensation
- Self-aligning fluid dynamic thrust bearing
- Increased reliability and operational lifetime (no hydraulic balancing device is required)
- Identical foundation fixture layout and suction flange arrangement within the series
- Oil bath lubrication for the end thrust and support bearings (option)
- Gland type shaft end sealing (option)

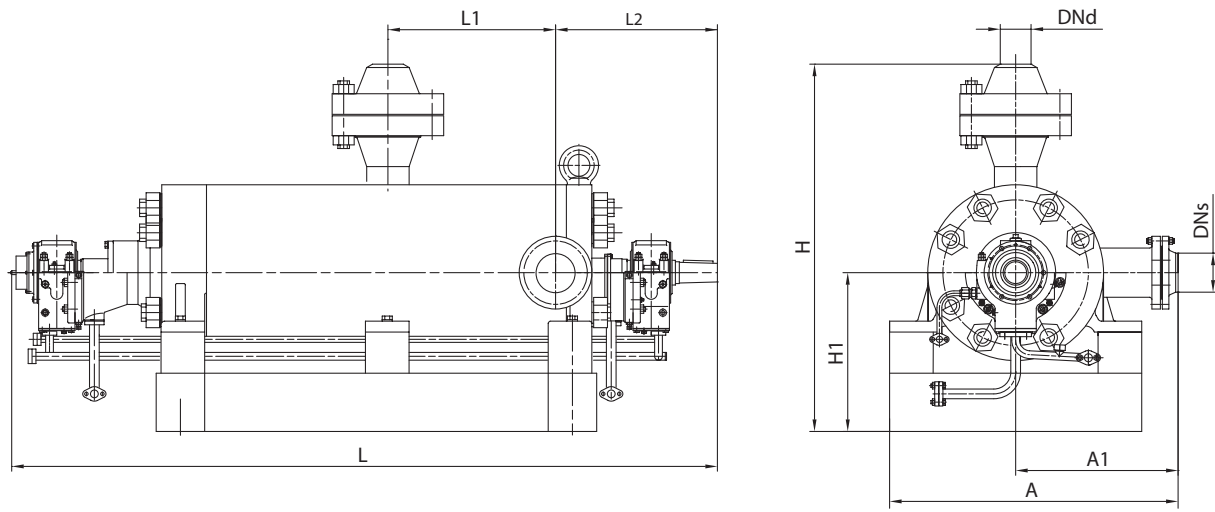


TECHNICAL DATA

Pump type	P _{suction} , bar, max	Capacity, m ³ /h	Head, m	NPSHr, m	Motor power, kW
CNSp 45-1050-2	31	45	1050	5	500
CNSp 45-1422-2	31	45	1422	5	630
CNSp 45-1900-2	31	45	1900	5	800
CNSp 63-1050-2	31	63	1050	5	500
CNSp 63-1422-2	31	63	1422	5	630
CNSp 63-1900-2	31	63	1900	5	1000
CNSp 90-1050-2	31	90	1050	5	630
CNSp 90-1422-2	31	90	1422	5	800
CNSp 90-1900-2	31	90	1900	5	1000
CNSp 120-1050-2	31	120	1050	6	800
CNSp 120-1422-2	31	120	1422	6	1000
CNSp 120-1900-2	31	120	1900	6	1250
CNSp 180-1050-2	31	180	1050	7	800
CNSp 180-1422-2	31	180	1422	7	1250
CNSp 180-1900-2	31	180	1900	7	1600
CNSp 240-1050-2	31	240	1050	7	1000
CNSp 240-1422-2	31	240	1422	7	1250
CNSp 240-1900-2	31	240	1900	7	1600
CNSp 315-1050-2	31	315	1050	9	1600
CNSp 315-1422-2	31	315	1422	9	2000
CNSp 315-1900-2	31	315	1900	9	2500

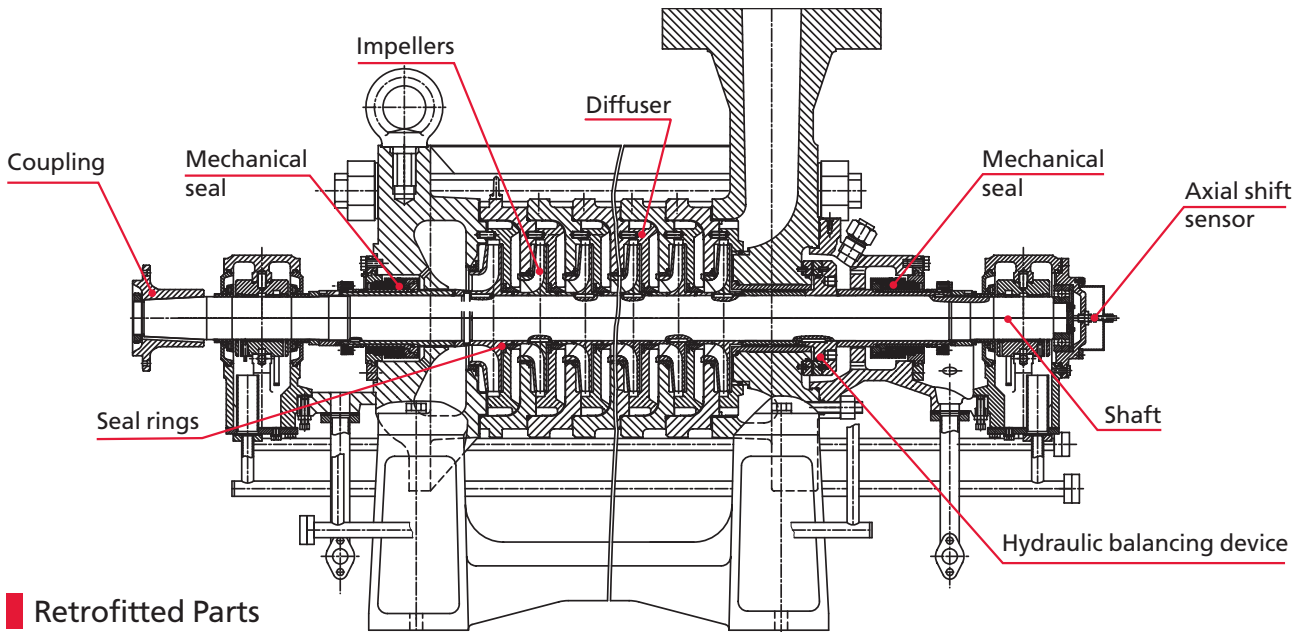
1. Synchronous rotation speed is 3000 rpm 2. Motor power is specified for density of 1000 kg/m³ 3. Customized parameters are optionally available

OVERALL DIMENSIONS. CNS_p PUMPS (BACK-TO-BACK IMPELLERS)



Model	DN _s	DN _d	A	A1	H	H1	L	L1	L2
CNS _p 45-1050-2	150	125	1230	670	1425	565	2402	594	625
CNS _p 45-1422-2					1515	655	2782	784	
CNS _p 45-1900-2					3162	974			
CNS _p 63-1050-2					1425	565	2402	594	
CNS _p 63-1422-2					1515	655	2782	784	
CNS _p 63-1900-2					3162	974			
CNS _p 90-1050-2					1425	565	2402	594	
CNS _p 90-1422-2					1515	655	2782	784	
CNS _p 90-1900-2					3162	974			
CNS _p 120-1050-2					1425	565	2402	594	
CNS _p 120-1422-2					1515	655	2782	784	
CNS _p 120-1900-2					3162	974			
CNS _p 180-1050-2					1425	565	2402	594	
CNS _p 180-1422-2					1515	655	2782	784	
CNS _p 180-1900-2					3162	974			
CNS _p 240-1050-2					1425	565	2402	594	
CNS _p 240-1422-2					1515	655	2782	784	
CNS _p 240-1900-2					3162	974			
CNS _p 315-1050-2	200	150	1275	685	1635	675	2354	594	640
CNS _p 315-1422-2							2639	784	
CNS _p 315-1900-2							3019	974	

CNS PUMPS RETROFIT



Retrofitted Parts

HMS Group offers the retrofit program for the earlier generation of CNS pumps, which constitute a significant amount of the pumping equipment in the water injection systems used at oilfields.

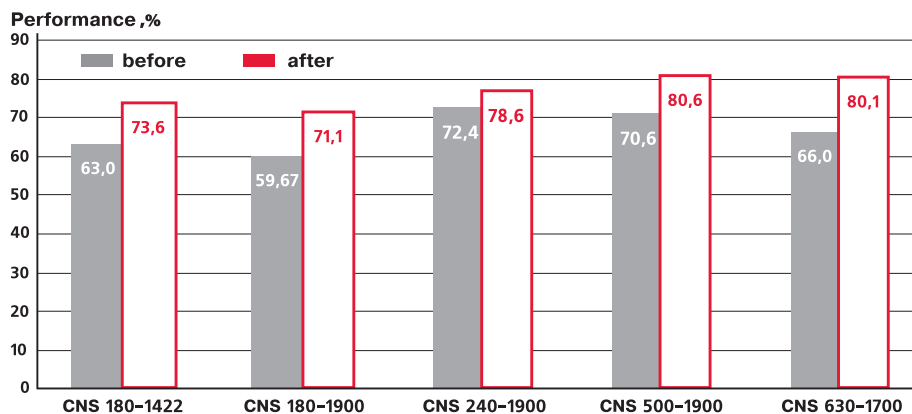
The retrofit program results in improved performance, reliability and maintainability of CNS pumps, as well as reduced energy consumption and significant durability increase.

The HMS Group takes appropriate warranty liability in respect of supplied parts and components quality and implemented works under the CNS pumps retrofit program.

SCOPE OF WORK

- Audit
 - current status confirmation
 - current energy consumption
- Defining optimal parameters
- Retrofit kit manufacturing
- Stand testing and trial running in the client presence with registration of results
- Pump overhaul with retrofit kits
- On-site installation, alignment, commissioning
- On-site testing to confirm stand results
- Monitoring and service maintenance

Average performance of CNS pumps before and after retrofit



ECPK Pumps

GENERAL DESCRIPTION

ECPK series pumps are intended for supply of ground and Cenomanian water from boreholes to the injection stations in the oil recovery processes at oilfields.

DESIGN

ECPK is a series of centrifugal multistage submersible pumps. The pumping unit also includes the electric motor of PED or PEDP series.

MATERIALS

- Impellers & diffusers: corrosion-resistant steel
- Hydraulic balancing device: siliconized graphite
- Shaft: corrosion-resistant steel
- Casing parts: carbon steel

PUMPED LIQUID

Ground water / Cenomanian water

Temperature, °C (max) for oil-filled motors	60
Temperature, °C (max) for water-filled motors	40
Solid particles concentration, g/l	0.1
Density, kg/m ³	1200
pH	5.4 - 9
Total mineralization, g/l, up to	250



SCOPE OF SUPPLY

Pump only:

- pump
- coupling
- spare parts, tools and accessories
- manual

Pumping unit:

- pump
- coupling
- submersible electric motor of PED or PEDP series
- spare parts, tools and accessories
- manual

PUMP DESIGNATION

1 ECPK 16-XXXX-XXX

Model

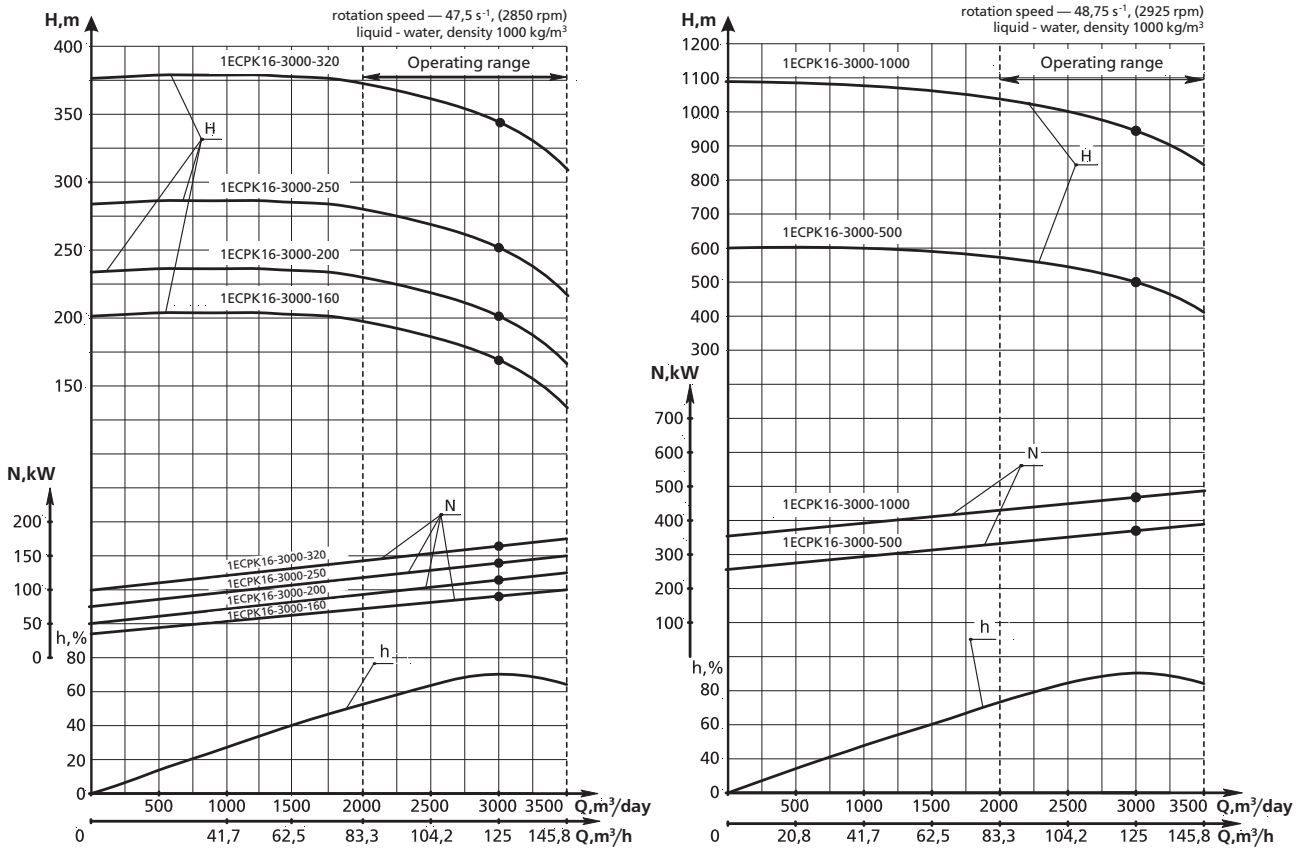
Series

Borehole diameter, inches

Capacity, m³/day

Head, m

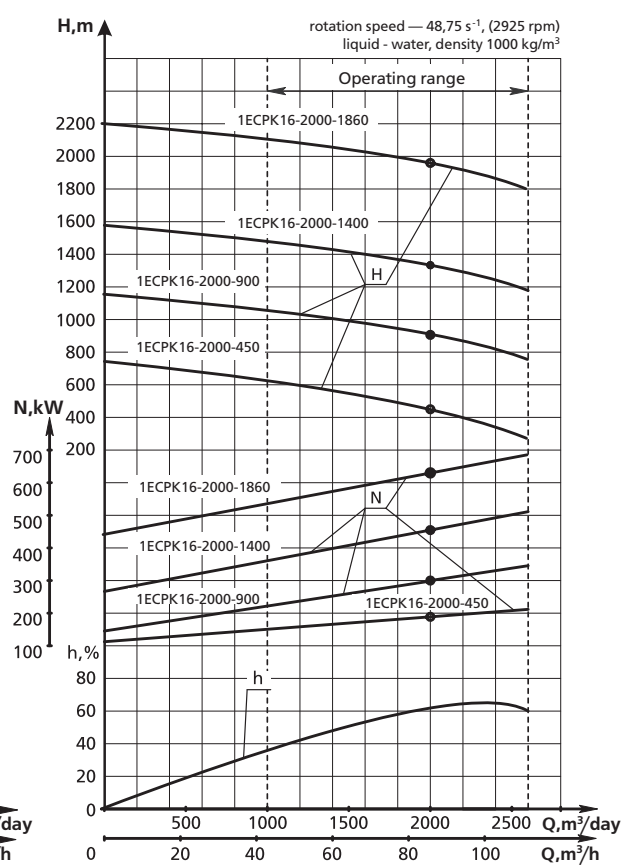
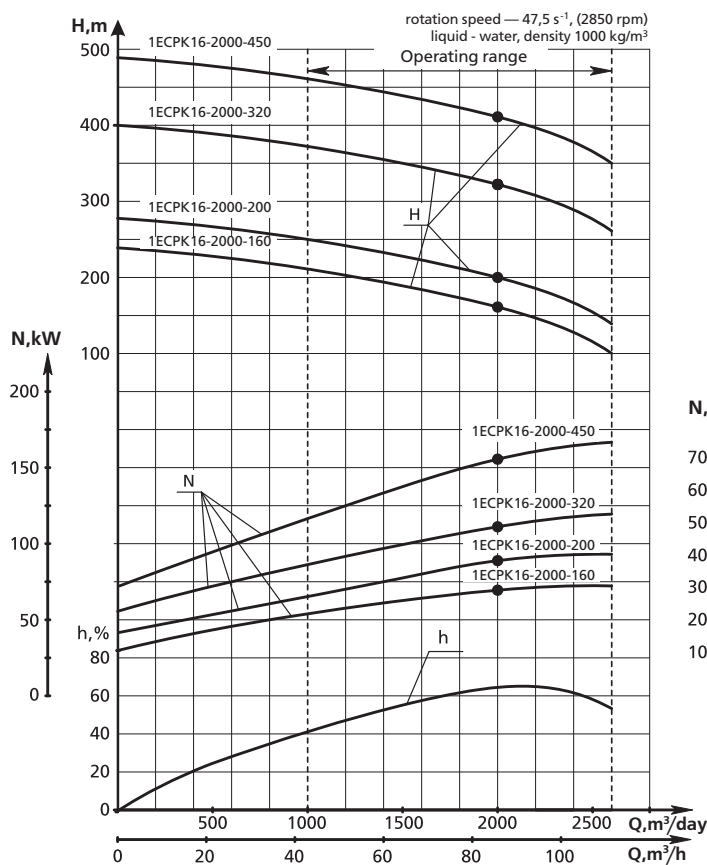
PERFORMANCE RANGE AND TECHNICAL DATA



1ECPK 16 type	Capacity, m ³ /h (m ³ /day)	Head, m	Rotation speed, s ⁻¹ (rpm)	Performance, %	Electric motor power at p=1000 kg/m ³ (p=1200 kg/m ³), not less	Power consumption, kW (at p=1000 kg/m ³)	Number of stages	Weight, kg, max	Dimensions, L x d, mm
3000-160*	125 (3000)	160	47.5 (2850)	70	90(115)	88	3	210	920x375
3000-200*		200			125	116	4	265	1050x375
3000-250*		250			140 (160)	139	5	320	1170x375
3000-320*		320			160 (180)	159	6	570	1550x351
3000-500		500	48.75 (2925)		280	276	9	785	1905x360
3000-1000		930			500 (700)	460	16	1530	3055x360

* With oil-filled motors

PERFORMANCE RANGE AND TECHNICAL DATA



1ECPK 16 type	Capacity, m ³ /h (m ³ /day)	Head, m	Rotation speed, s ⁻¹ (rpm)	Performance, %	Electric motor power at p=1000 kg/m ³ (p=1200 kg/m ³), not less	Power consumption, kW (at p=1000 kg/m ³)	Number of stages	Weight, kg, max	Dimensions, L x d, mm
2000-160*	83.3 (2000)	160	47.5 (2850)	65	90 (125)	65	4	275	1010x375
2000-200*		200				82	5	310	1120x375
2000-320*		320			113	8	630	1720x351	
2000-450*		450			180	10	900	1950x351	
2000-450		450	48.75 (2925)		195	900	1930x360		
2000-1400		1360			450		30	2150	4910x360

* With oil-filled motors

HMS Group for Oil & Gas



Key Facts

HMS Group is the leading in Russia and CIS manufacturer of pumps, compressors, modular and process equipment, provider of integrated solutions for oil & gas, nuclear & thermal energy, water & utilities.

The HMS Group incorporates engineering and manufacturing affiliate companies located in Russia, Ukraine, Belarus and Germany and currently employing over 16 500 people.

R&D

The R&D infrastructure is represented by the six centrally managed R&D centers in Russia and CIS where the latest versions of engineering software and simulation methods are applied including 3D modeling.

Manufacture and Standards

- Processing centers and NC machine tools by the world leading manufacturers
- Four large foundries with up-to-date molding lines and induction furnaces
- Testing stands with up to 25.000 m³/h capacity and up to 14 MW power
- ISO 9001:2008 Quality Management

The products are manufactured by international standards ISO, API, DIN, NORSOK, ANSI, ASME and can be tailored to the customer's specification.

Worldwide

The HMS Group has considerable experience in supply, commissioning and after sales service of equipment in Europe, Iraq, Indonesia, India, China, USA and other countries as well as EPC projects in Russia and in republics of the former USSR.

Engineering, Manufacture and Service Competencies in Oil & Gas

Pumps: Upstream

- water injection pumps
- multiphase pumps
- pumps for oil transportation within oilfields
- pumps for primary oil processing

Pumps: Midstream

- trunk pipeline pumps
- booster pumps
- leakage removal pumps

Pumps: Downstream

- process & auxiliary pumps

Compressors

- compressor packages
- compressor systems
- complete compressor stations

Oil & Gas Equipment

- modular cluster pump stations
- oil and water treatment units
- associated gas cleaning units
- oil, gas, and water flow metering units
- tanks and pressure vessels



HYDROMASHSERVICE is an integrated commercial and engineering company of HMS Group. The company supplies the equipment manufactured by the Group's divisions and implements the complex projects in Russia and abroad.



HYDROMASHSERVICE is an integrated commercial and engineering company of the HMS Group.
We are looking for experienced dealers & distributors to sell products and services.
Please forward your queries to below contact details:

12, Aviakonstruktora Mikoyana str.,
Moscow, 125252, Russia

Phone: + 7 (495) 664 8171
Fax: + 7 (495) 664 8172

e-mail: hydro@hms.ru
www.grouphms.com
www.hms.biz

The information in this catalogue is intended for reference purposes only and primary selection of the products developed and manufactured by HMS Group and its affiliated companies. A complete set of the technical information regarding all products of HMS Group is available in relevant technical manuals from appropriate manufacturer.

HMS Group reserves its right to alter the products without a prior notice and is not responsible for possible errors and misprints in catalogs, brochures and other printed materials.